



Corporate Presentation November 2011



Disclaimer

Certain information set forth in this presentation contains forward-looking statements. By their nature, forward-looking statements are subject to numerous risks and uncertainties, some of which are beyond Argosy Energy Inc.'s control, including the impact of general economic conditions, industry conditions, volatility of commodity prices, currency fluctuations, imprecision of reserves estimates, environmental risks, competition from other industry participants, the lack of availability of qualified personnel or management, stock market volatility and ability to access sufficient capital from internal and external sources. Readers are cautioned that the assumptions used in the preparation of such information, although considered reasonable at the time of preparation, may prove to be imprecise, and as such, undue reliance should not be placed on forward-looking statements. Argosy's actual results, performance or achievement could differ materially from those expressed in, or implied by, these forward-looking statements, and accordingly, no assurance can be given that any of the events anticipated by the forward-looking statements will transpire or occur, or if any of them do so, what benefits that Argosy will derive there from. The forward-looking statements contained in this presentation are made as at the date of this presentation and Argosy disclaims any intention or obligation to update or revise any forward-looking statements, whether as a result of new information, future events or otherwise. This presentation uses "cash flow", "cash flow per share" and "net debt" which should not be considered an alternative to or more meaningful than similar measures as determined in accordance with International Financial Reporting Standards ("IFRS") as an indicator of the Company's performance. These terms do not have any standardized meaning as prescribed by IFRS. Argosy's determination of funds from operations and funds from operations per share may not be comparable to that reported by other companies. Management uses cash flow to analyze operating performance and leverage, and considers cash flows to be a key measure as it demonstrates the Company's ability to generate cash necessary to fund future capital investments and to repay debt. The term "net debt" is used by the Company to describe one of the measures used by Company management to monitor the remaining availability of its credit facilities.

Certain natural gas volumes have been converted on the basis of 6,000 cubic feet of natural gas to 1 barrel of oil ("boe"). Such boe conversion ratio is based on an energy equivalency conversion method primarily applicable at the burner tip and may be misleading, particularly if used in isolation. The conversion ratio used herein does not represent a value equivalency at the wellhead.

The Argosy Team

Officers

- **Peter Salamon**
President & CEO
Argosy Energy, Accrete Energy, Olympia Energy Inc. (1989)
- **Tom Dalton**
Vice President, Finance & CFO
Argosy Energy, Accrete Energy, Olympia Energy (1992)
- **Ray Dobek**
Executive Vice President, Exploration
Argosy Energy, Accrete Energy, Olympia Energy Inc. (1992)
- **Norm George**
Vice President, Operations
Argosy Energy, Accrete Energy, Olympia Energy (1993)
- **Rick Campbell**
Vice President, Engineering
Argosy Energy, Accrete Energy (2004)

Directors

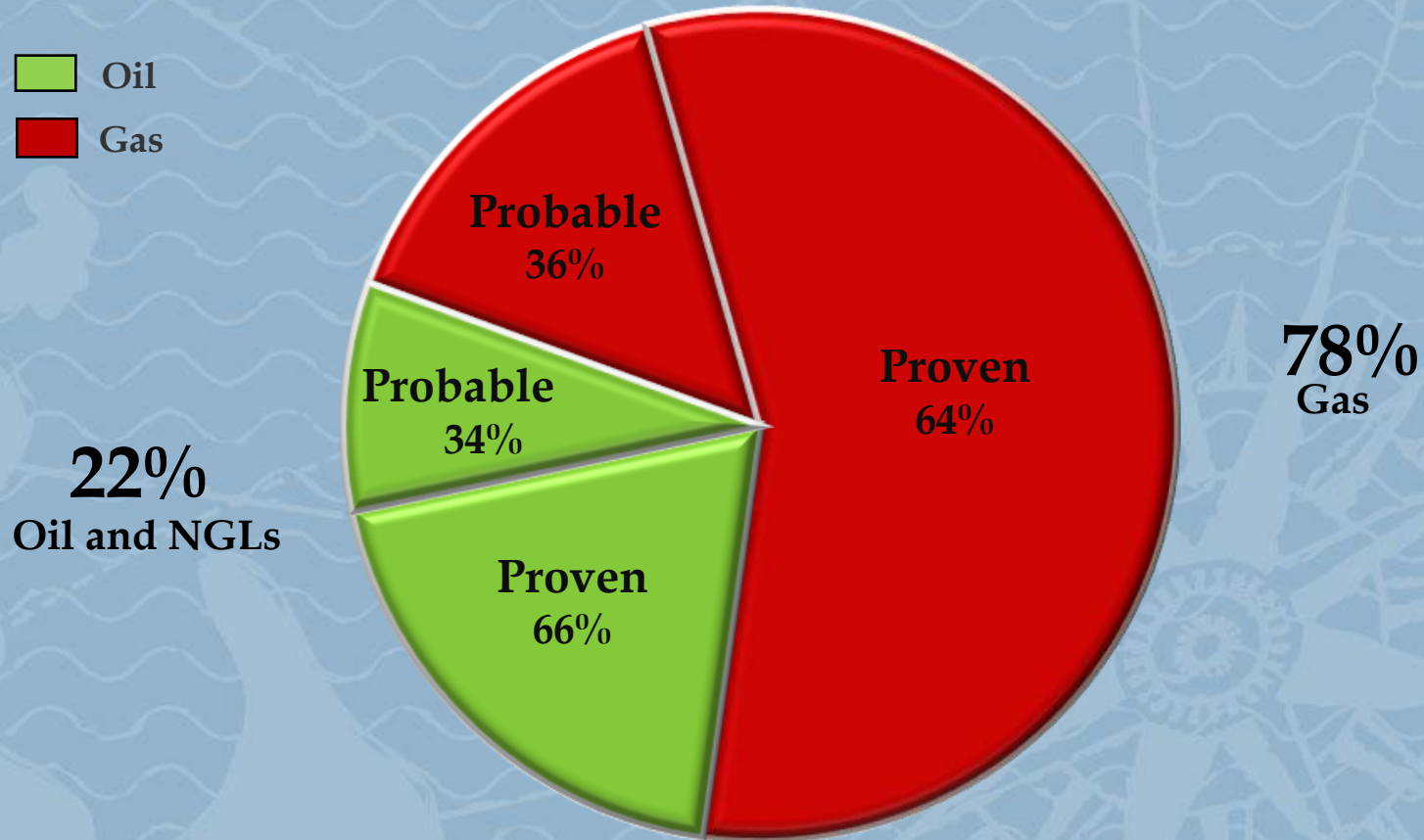
- **Brian Mellum** (1999)
- **Jake Roorda** (2008)
- **Ken Faircloth** (2000)
- **John Poetker** (1992)
- **Peter Salamon** (1989)
- **Ray Dobek** (1992)

Financials

Shares (mm)	22.2 outstanding	24.4 fully diluted
Options	2.2 mm @ \$1.58/share	
Inside Ownership	23% outstanding	30% fully diluted
Bank Lines (reviewed April 2011)	\$26 mm and \$4 mm development line	
Bank Debt (Est.) (October 1, 2011)	\$23.5 mm	

Reserves

Oil
Gas



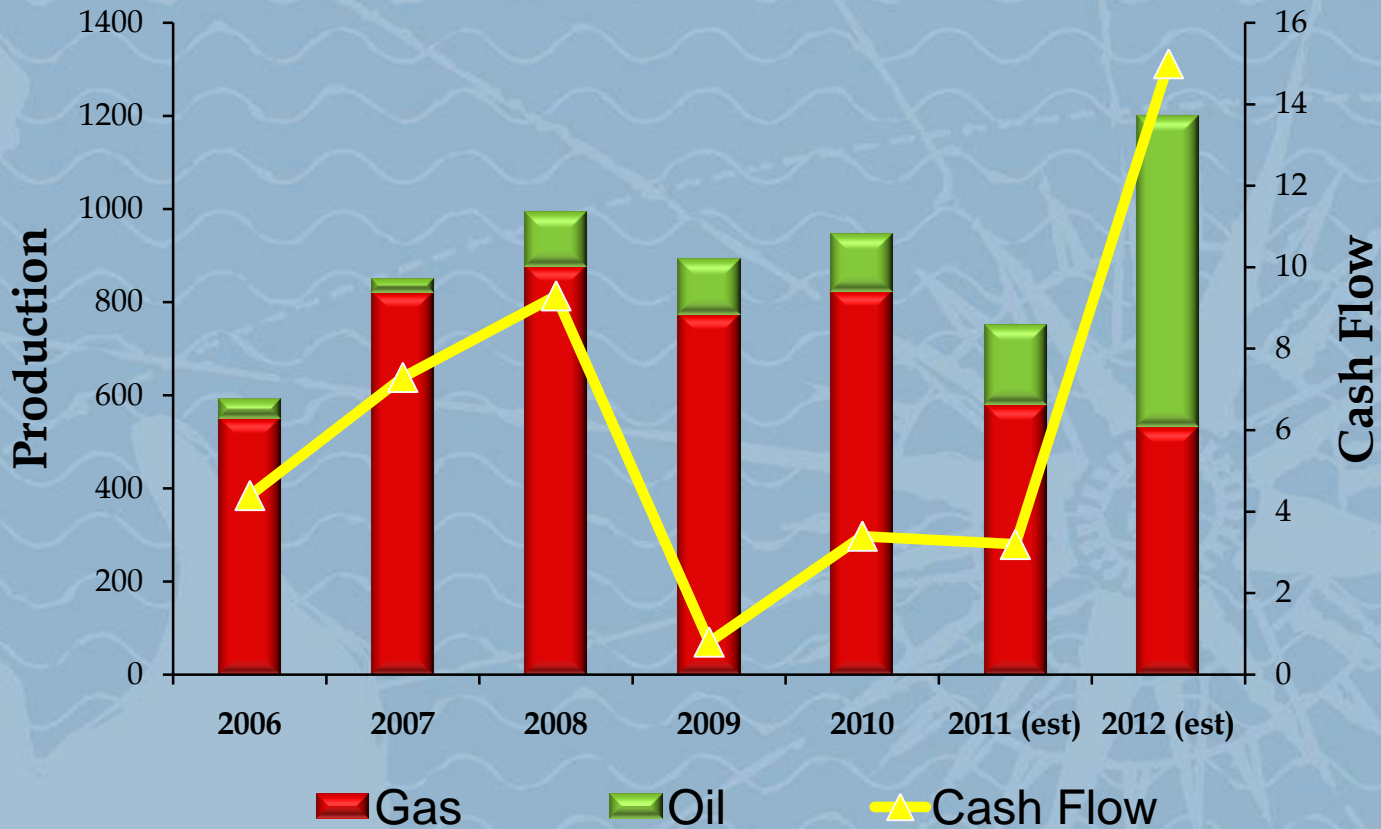
Total Proven (64%) + Probable (36%) = 4,188 mboe*

***Provided by GLJ, December 31, 2010 - Argosy and Radius combined**

Production / Cash Flow

boe/d millions \$

Production as of November 1, 2011 is 850 boe/d



Capital Expenditures 2012

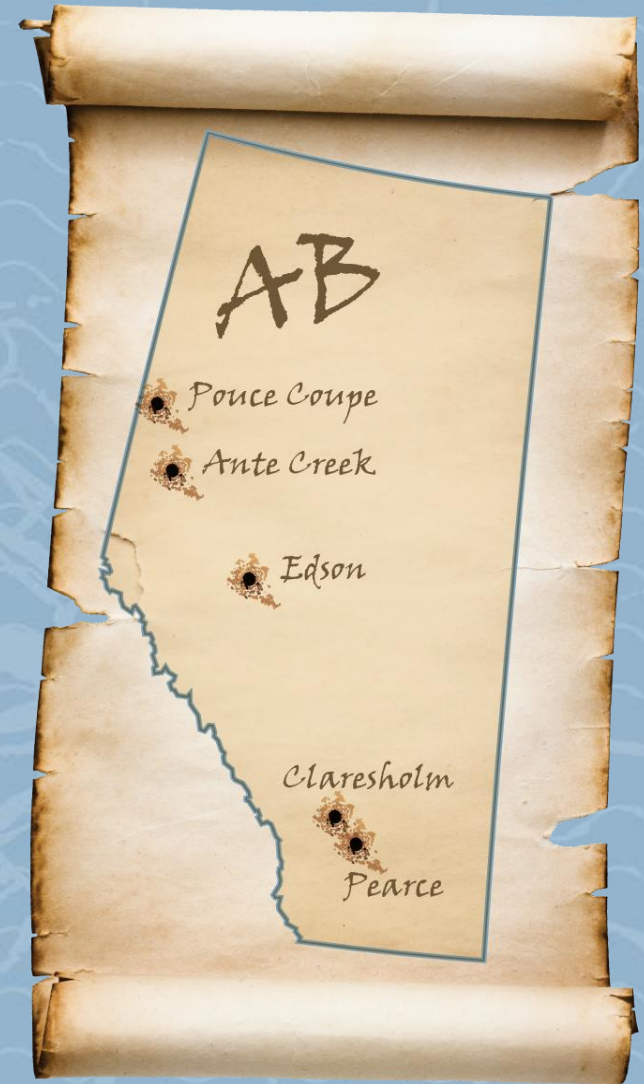
Claresholm

Big Valley	6 wells	(\$36.0 mm)
Land & Seismic		(\$ 4.5 mm)
Total		(\$40.5 mm)
Proceeds from Disposition (Sales of Ante Creek/Edson)	(est)	\$30.0 mm
Net		(\$10.5 mm)

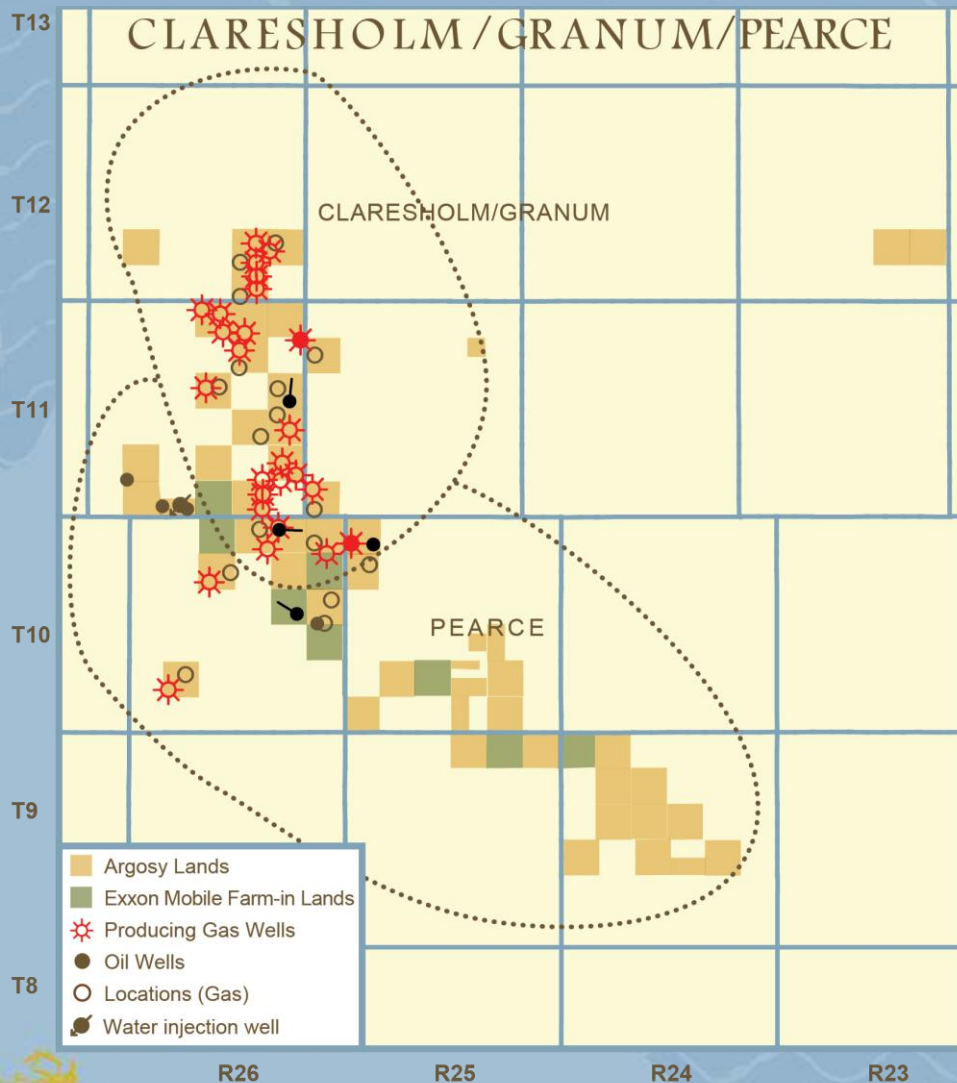
Land Overview

April 7, 2011	Gross Acres	Net Acres
Claresholm*/Pearce	30,143	29,375
Ante Creek	7,680	5,732
Edson	10,240	10,240
Other Properties	7,040	4,248
Total Acres	55,103	49,595

*Option to earn an additional 5,120 net acres with ExxonMobil Farm-in lands



Claresholm/Granum/Pearce/Deep



Claresholm/Granum

- 100% working interest
- 21 producing gas wells
- 625 boe/d current production
- Company owned gas facility (75% WI) with maximum throughput of 11 mmcf/d

Pearce

- 6 vertical oil wells and 1 hz well drilled to date with 8 oil zones, 40° API

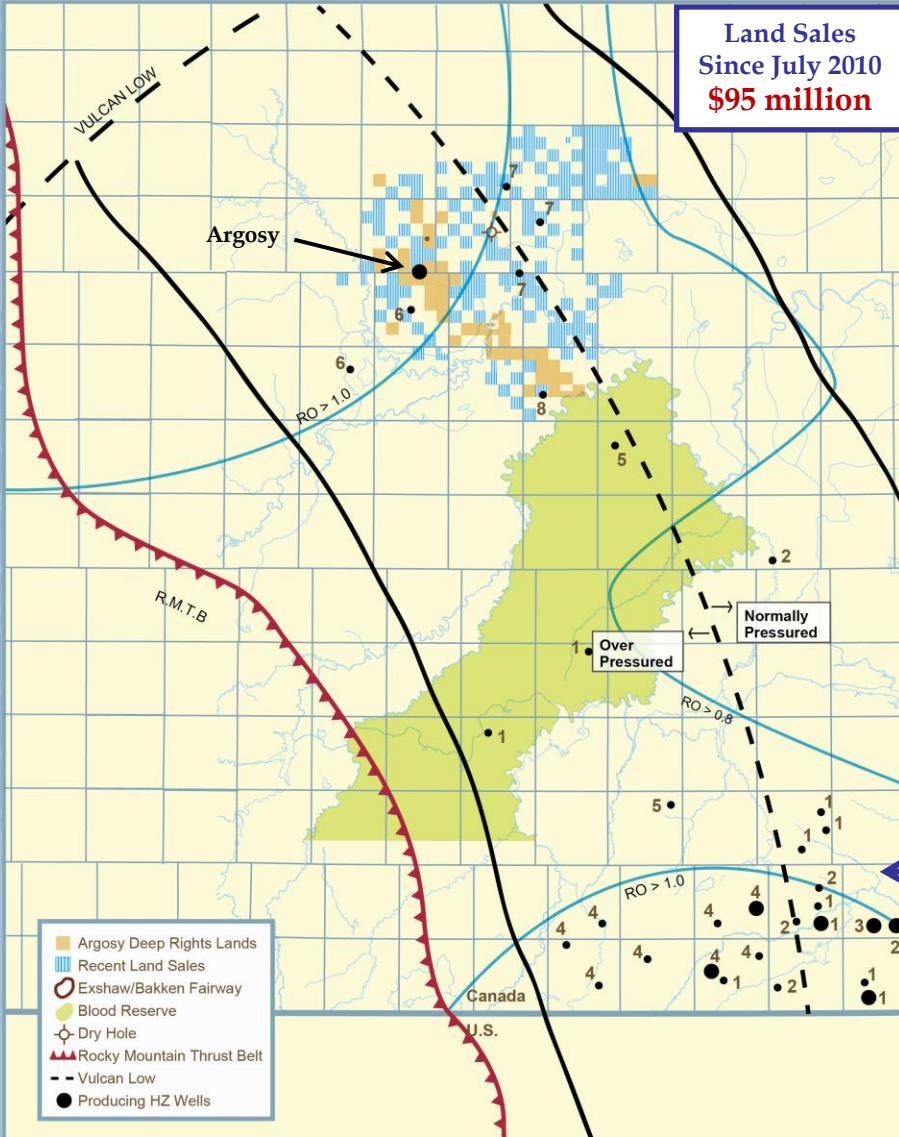
Claresholm Deep

- Recent Drilling:
2 hz wells, 1 vertical well

Claresholm

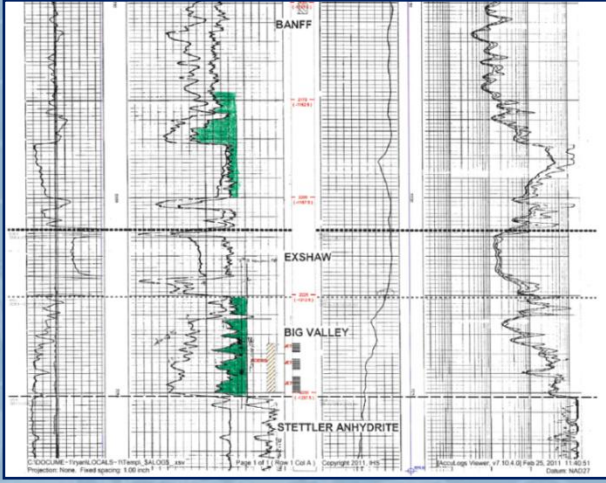
Alberta Basin Bakken Drilling Activity

R31 R30 R29 R28 R27 R26 R25 R24 R23 R22 R21 R20 R19W4



Land Sales
Since July 2010
\$95 million

T14
T13
T12
T11
T10
T9
T8
T7
T6
T5
T4
T3
T2
T1



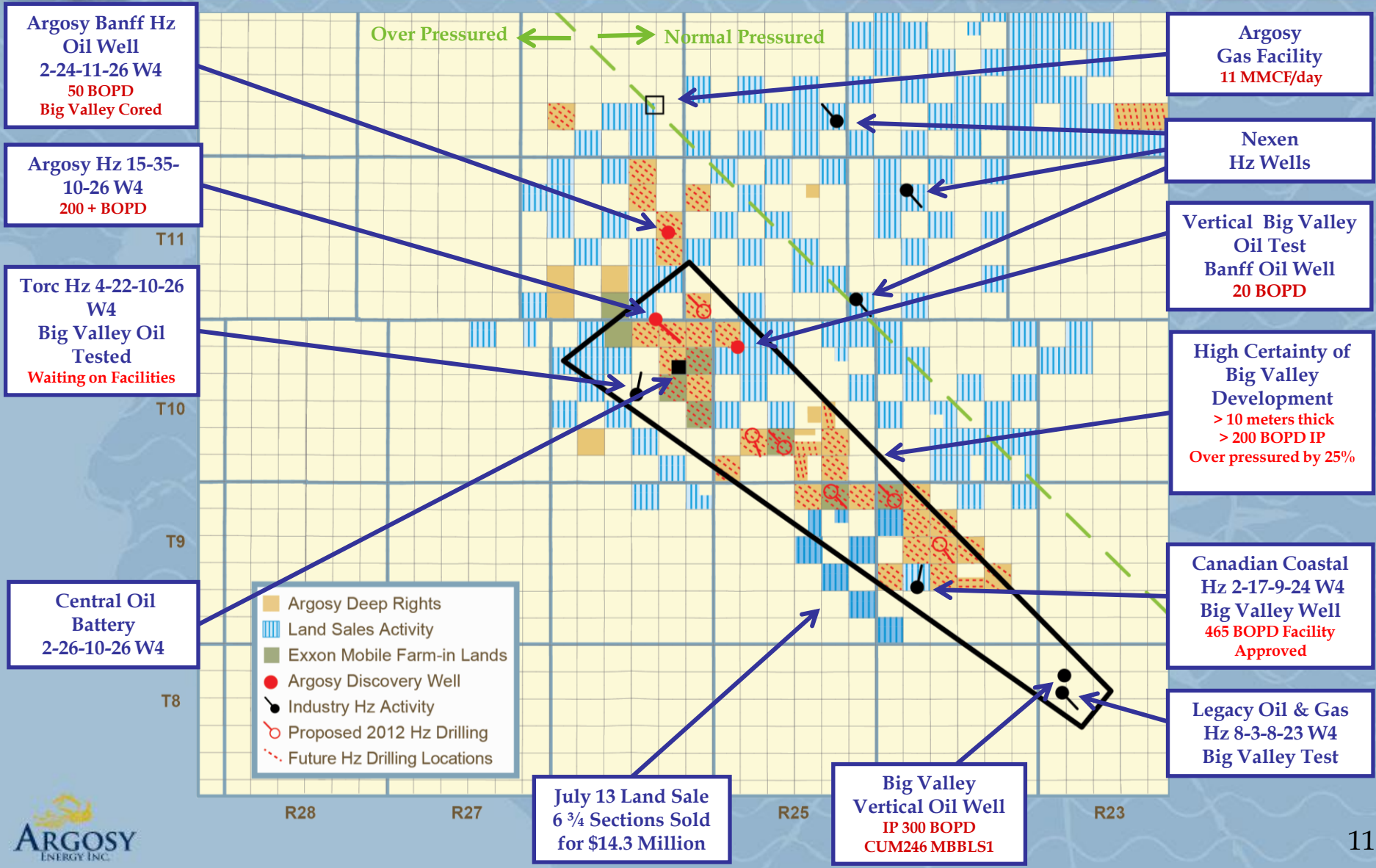
List of Operators

- | | |
|-------------------|---------------------|
| 1. Murphy Oil | 5. Legacy Oil |
| 2. Crescent Point | 6. Torc Oil and Gas |
| 3. DeeThree | 7. Nexen |
| 4. Shell | 8. Canadian Coastal |



Claresholm

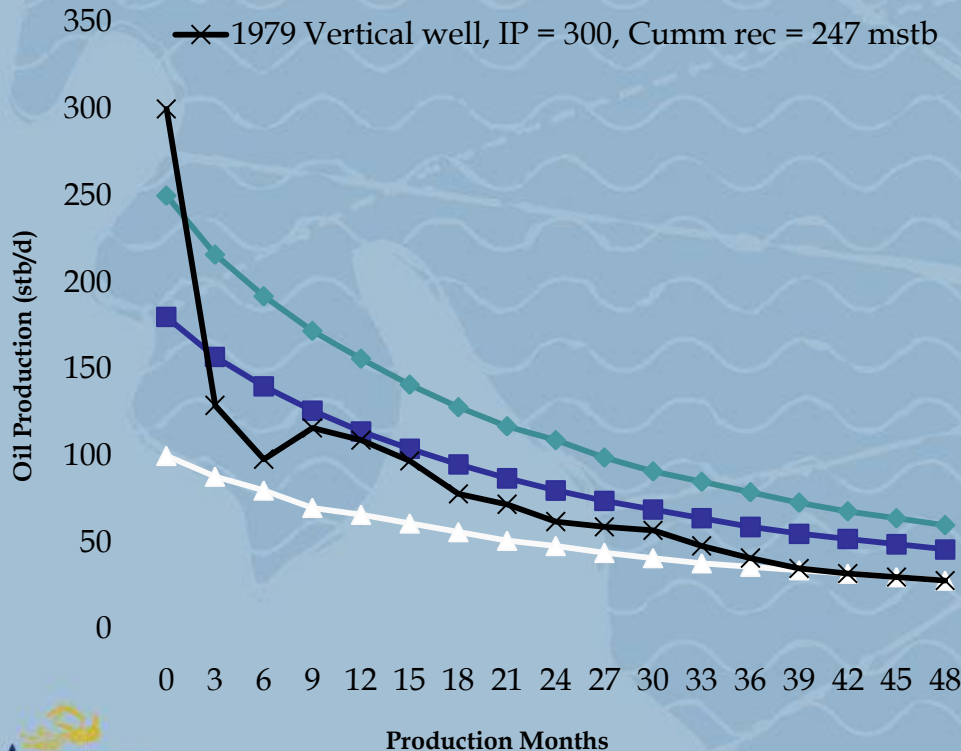
Big Valley Oil Development



Big Valley Hz Well Economics

Production Type Curves

- ◆ High case, IP = 250, Cumm rec = 300 mstb
- Base case, IP = 180, Cumm rec = 220 mstb
- ▲ Breakeven case, IP = 100, Cumm rec = 125 mstb
- ✕ 1979 Vertical well, IP = 300, Cumm rec = 247 mstb

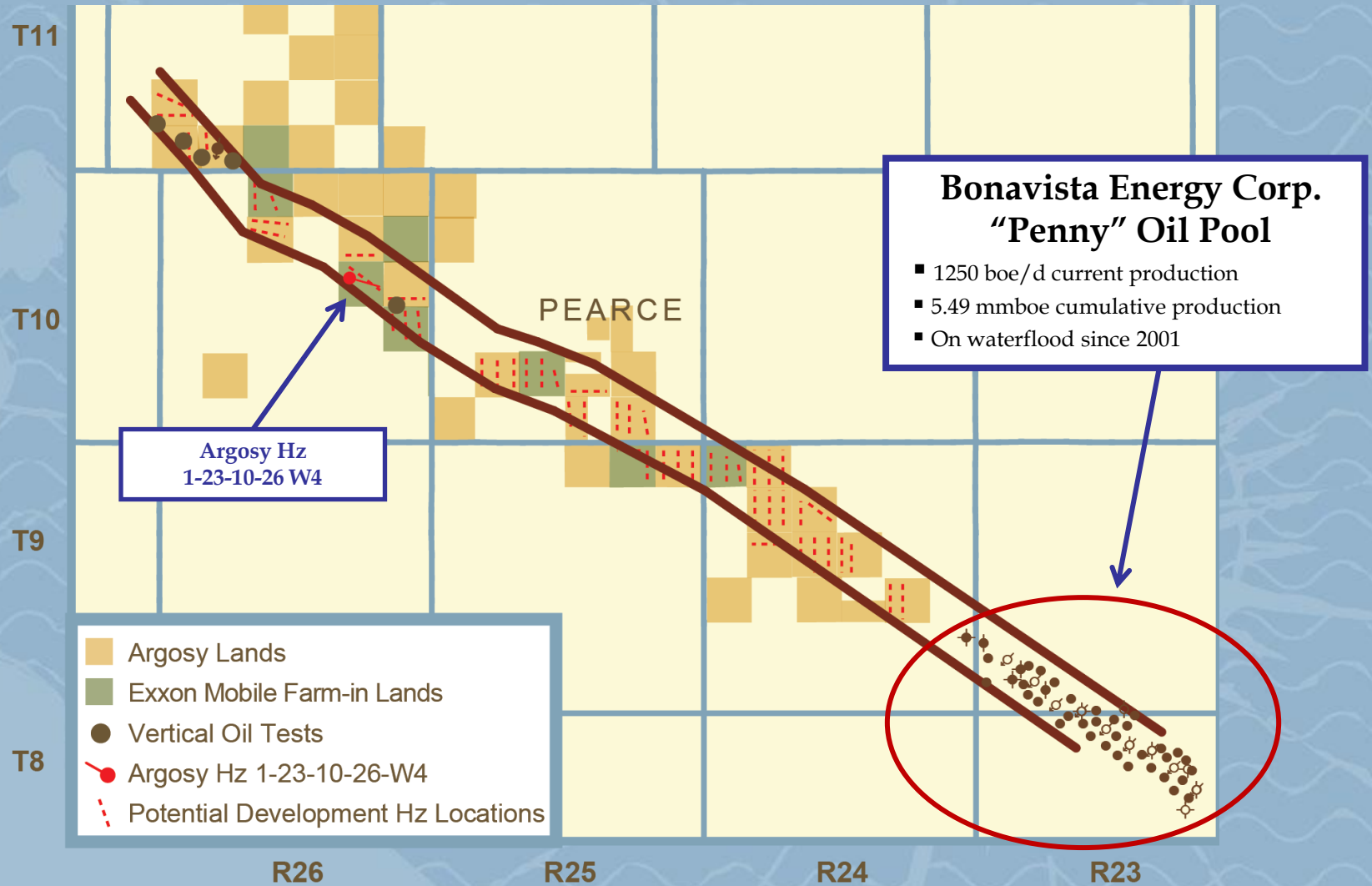


Base Case Well Economics

- Well costs (drill, complete equip):
- Initial hz \$6.0 MM/well
- ◆ High Case
NPV 10%: \$6.5 MM
Rate of Return: 109%
- Base Case
NPV 10%: \$3.9 MM
Rate of Return: 64%
- ▲ Breakeven Case
NPV 10%: \$0.0 MM
Rate of Return: 0%
- Locations: 140

Pearce

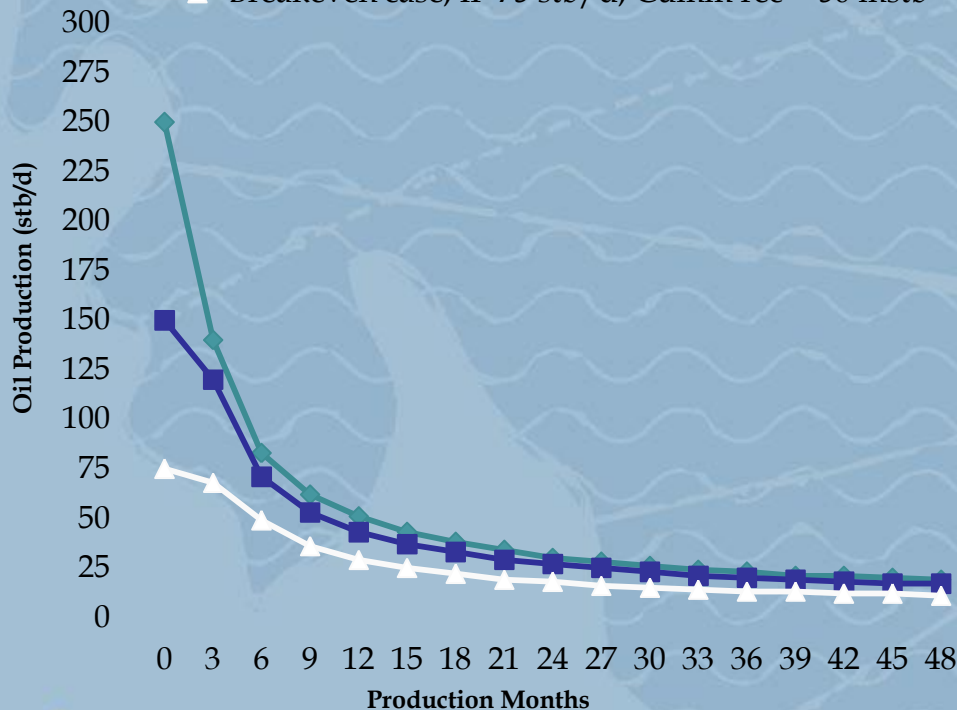
Barons Oil Development



Barons Horizontal Well Economics

Production Type Curves

- ◆ Simulation case, IP 250 stb/d, Cumm rec = 150 mstb
- Base case, IP 150 stb/d, Cumm rec = 100 mstb
- ▲ Breakeven case, IP 75 stb/d, Cumm rec = 50 mstb



Well Economics

- Well cost (drill, complete and equip):
- \$3.0 MM/hz well
- ◆ Simulation Case
NPV 10%: \$3.2 MM
Rate of Return: 108%
- Base Case
NPV 10%: \$1.9 MM
Rate of Return: 63%
- ▲ Breakeven Case
NPV 10%: \$0.0 MM
Rate of Return: 0%
- Locations: 50
- Land: 22 sections

Summary

- **Low share capital and high working interest exposure to the Alberta Bakken with excellent share price leverage to drilling success**
- **Proven management with a track record of creating shareholder value**
- **Low finding and development costs and low operating costs**
- **Large drilling inventory of 3D, seismically defined drilling locations, focusing on light oil**
- **100% working interest in the majority of prospects to reduce partner risk**

Contact Information

2100, 500 - 4 Avenue SW
Calgary, Alberta T2P 2V6

Tel: (403) 269-8846

Fax: (403) 269-8366

investor@argosyenergy.com

www.argosyenergy.com

